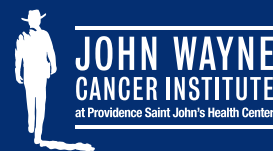


# Cancer Innovation

JOHN WAYNE CANCER INSTITUTE



FALL 2020

Issue 02

## Practice Location:

Providence Saint John's  
2121 Santa Monica Blvd.  
Santa Monica, CA 90404



CONTACT DR. FANCHER

## Welcome Our New Breast Surgeon!

Crystal E. Fancher, M.D., Breast Surgical Oncologist, Margie Petersen Breast Center

Crystal Fancher, MD is a surgical breast oncologist who has expertise in treating patients with breast cancer and benign breast diseases. She specializes in novel treatments such as oncoplastic breast-conserving surgery and intraoperative radiation therapy.

Dr. Fancher was born in Santa Monica, CA and knew at an early age that she wanted to be a physician. She did her surgical internship at Loma Linda where her passion for breast cancer and women's health was ignited. She

continued her general surgery training at Mercer in Macon, GA where she fostered her special interest in the treatment of breast cancer and breast health. She then pursued advanced training at the University of Southern California (USC) / Hoag where she completed her fellowship in Breast Surgical Oncology. She was awarded the 2020 Muzzy Family Fellowship in Oncoplastic Breast Surgery. She is excited to be back in Santa Monica and providing care to breast cancer patients in the community she grew up in.

## What's Inside:

MEET DR. CRYSTAL FANCHER 01

BRIDGING THE GAP IN CANCER CARE 02

CELEBRATIONS 03

CUTTING-EDGE CARE 04



## Centers of Excellence

Our nine centers are dedicated to the understanding, diagnosis, and innovative treatment of cancer.



## Webinars

Watch and register for our complimentary webinars featuring our medical experts.



## Blogs

Learn about cancer research, prevention, symptoms, novel treatments options & more.



## Video Library

Meet our cancer center teams and learn about the conditions we treat.



## News

Stay ahead of the latest news, by checking out our media articles.



## Events

Check out our upcoming & archived events for the latest updates about cancer research.

# Bridging the Gap in Cancer Care

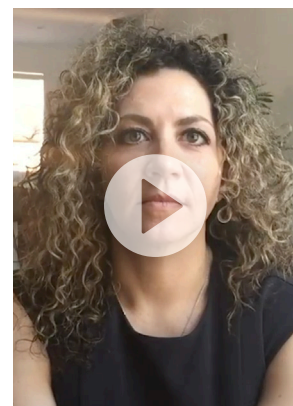


## Translational Bioinformatics of COVID-19

JWCI has a long history in translational research, and thus it was no surprise that our exceptional team of physician-researchers were able to quickly pivot and start applying their expertise in immunology and oncology towards researching and understanding COVID-19. Medicine extends beyond the treatment of any given patient and applies a variety of non-clinical specialties, such as biostatistics, genetics, clinical informatics, and molecular biology, to look for predictors on how a disease acts at a population level. Using cutting edge molecular technology and a newly designed clinical informatics database, JWCI's translational research team has been at the forefront of COVID-19 research, providing much needed information to various hospital-based teams, including cardio-thoracic surgery, endocrinology and pathology, all using a single comprehensive system.

## A Doctor's Perspective

For many cancer survivors, the long-term challenges occur once their treatment ends. In the latest episode of Survivorship Today series, endocrine surgeon and cancer survivorship advocate, Dr. Goldfarb, shared with actor and producer Sterling K. Brown, what we can do to provide ongoing support for this vulnerable community. Watch their full conversation at [SurvivorshipToday.com](https://www.saintjohnscancer.org/survivorshiptoday.com)



**LEARN MORE ABOUT DR. GOLDFARB ►**

# Celebrations!



## Congratulations to Tiffany Juarez, Ph.D. for the Mission Spirit Award

Congratulations to Tiffany Juarez, Ph.D., for receiving our Q3 Mission Spirit Award! Tiffany is our incredible Program Manager in the Department of Translational Neurosciences. She is an outstanding and dedicated caregiver who truly lives the spirit of our Mission and Core Values, going above and beyond the call of duty to help everyone at JWCI. She displays our Core Values every day through her passion for science to help patients in our care. Join us in thanking Tiffany for living our Mission during this critical time of service in our ministry and region.

## New Podcast by Go Big AND Go Home showcasing Dr. Janie Grumley

New Podcast by [Go Big AND Go Home](#) showcasing [Janie Grumley](#), M.D., FACS, Director, Comprehensive Breast Program, Margie Petersen Breast Center at Providence Saint John's, and Associate Professor of Surgical Oncology at JWCI. Listen to learn how Dr. Grumley navigated her way from being a championship figure skater to a top-notch surgeon, the holistic approach she takes when meeting new patients, and her overall way of balancing a tremendous job where so many people rely on her.

**LISTEN NOW! ►**



## Saint John's Goes PINK

The [Margie Petersen Breast Center](#) at Providence Saint John's Health Center provides a one-stop, comprehensive, multidisciplinary clinic for an array of supportive services to complement your breast health conditions. Contact us at [310-582-7100](#), to schedule an appointment.

**LEARN MORE ►**

## Welcome Class of 2022 Oncology Fellows

**Wade Christopher, M.D.**  
Surgical Oncology Fellow

**Jennifer Keller, M.D.**  
Surgical Oncology Fellow

**Rebecca Marcus, M.D.**  
Surgical Oncology Fellow

**Sean Nassoii, D.O.**  
Surgical Oncology Fellow

**Michael Avery, M.D.**  
Minimally Invasive Neurosurgery Fellow

**Jeannie Su, M.D.**  
Urologic Oncology Fellow

**MEET OUR FELLOWS ►**



# Cutting-Edge Care



## Open Clinical Trials

Our clinical trial teams are helping to find medical advancements for our patients every day. Click on the links below to view our open clinical trials:

- [All Solid Tumors](#)
- [Brain, Head & Neck Cancer](#)
- [Breast Cancer](#)
- [Gynecologic Cancer](#)
- [Hematologic Cancer](#)
- [Lung Cancer](#)
- [Melanoma](#)
- [Urologic Cancer](#)
- [Cancer Support](#)
- [COVID-19](#)
- [View All Clinical Trials](#)

If you are interested in participating in a COVID-19 clinical trial, please contact our team via [Email](#) or phone [310-829-8271](tel:310-829-8271) to see if you are eligible.

## We are one Providence

In Southern California, you know us by many different names. But we are one health system, here for all your health needs. To make it easy for you to access our comprehensive network of care, our family of organizations is uniting under a common brand. This fall, you'll begin seeing signage at our hospitals with our new logo. Over time, you'll also see this common brand at all our locations. Since coming together in 2016, Providence Health & Services and St. Joseph Health have been working to improve the health of Southern Californians. The best of both organizations is at the heart of our brand.

We care about your health. Please don't delay the care you need. Telemedicine (virtual doctor visit) is also available when appropriate.

**QUESTIONS OR NEED TO SCHEDULE AN APPOINTMENT? CONTACT US ►**

### Grants:

In Q3 we were awarded 6 grants to help us research and fight cancer.

### Publications:

In Q3 we had 7 publications! All publications are featured on [PubMed](#).